



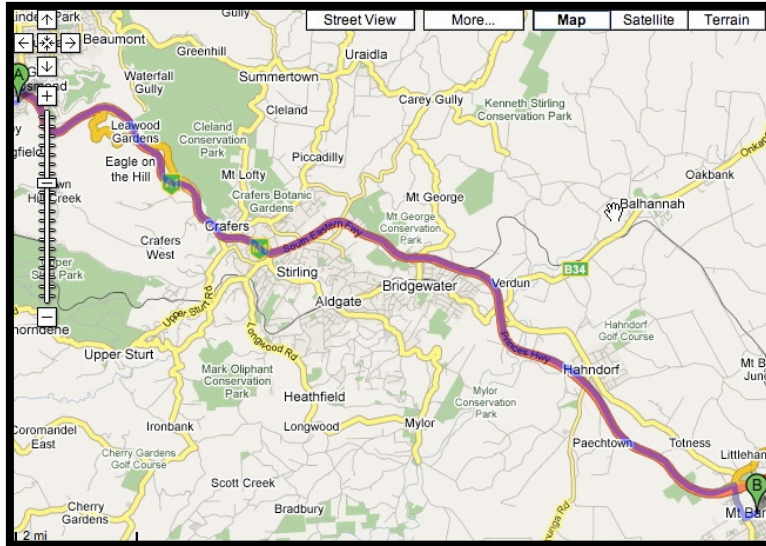
Druids Avenue

dermatology SA

Mount Barker

www.dermatologysa.com.au

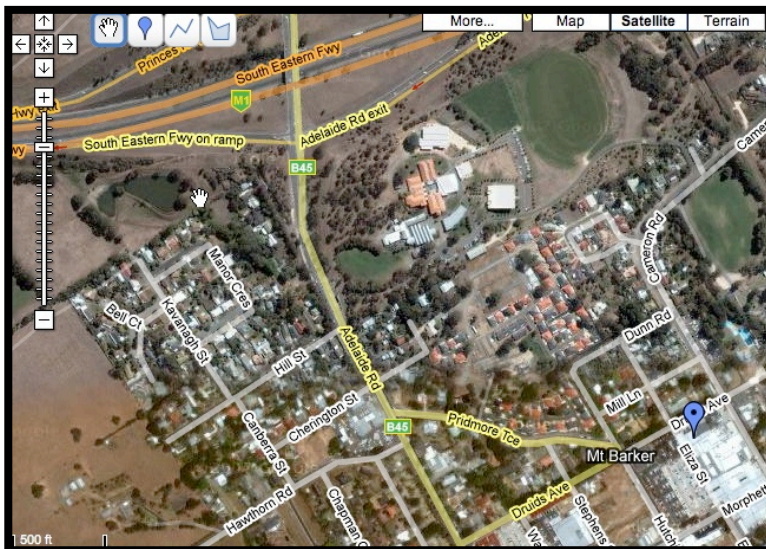
8398 4597



Go to the end of Portrush Road, then turn left into the Adelaide Crafers Highway

Continue along the South Eastern Freeway.

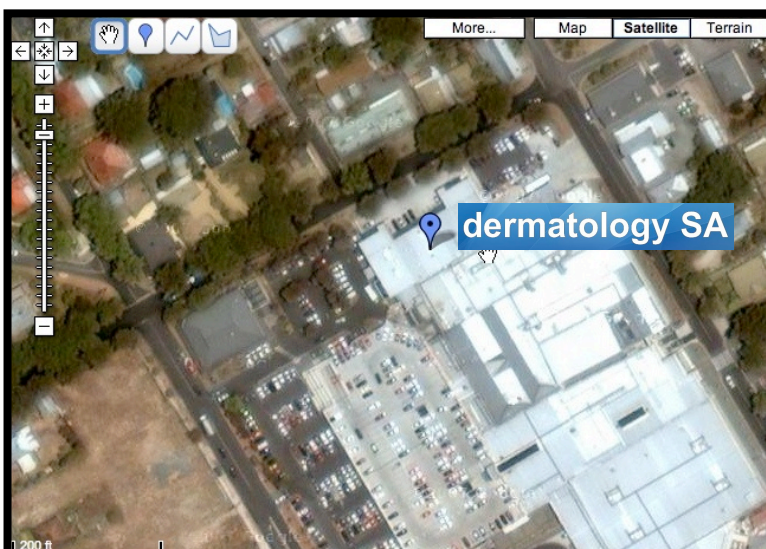
Mount Barker is approximately 10km further from Adelaide than Hahndorf.



You will see a sign indicating the exit from the freeway to Mount Barker on your left.

When you get to Mount Barker, turn into Adelaide Road, then turn left at the traffic lights into Druids Avenue.

Drive straight along Druids Avenue for some distance.



Drive past the corner medical centre, and further along you will see that our clinic is on the right hand side, next to a physiotherapy clinic. It is behind the Mt Barker Shopping Centre.

It takes a little more than 20 minutes to drive the 26km distance from the end of Portrush Road to our clinic.